

Cold Drink Machine



Libro di Uso & Manutenzione

Use & Maintenance Manual

**M & V S.r.l.
Via L. Guerra, 9
80040 Cercola
Italy
Tel/Fax +39 081 5552428
www.elcor.it
info@elcor.it**

Congratulations!

The unit you had bought is a Elcor S.r.l. product, built rigorously using the best materials. Before installation of the unit read carefully the instruction, Elcor S.r.l. couldn't be considerable responsible for any possible damages produced to people or things for non application of the instructions listed in this booklet.

WARNING

The norms shown in this booklet explain the installation, utilisation and maintenance of your drink dispenser.

- The use of an electric unit require the compliance of some norms, which are:
 - don't touch the unit with humid or wet hands
 - don't touch the unit bare-foot
 - don't use this unit in functions different for the ones it had been built.
- Connect the unit to a grid supply which have only the same value reported on the dispenser.
- Before carrying out any cleaning operation switch off the general switch, so pull off the plug from the grid supply.
- In case of breakdown or unworkable don't open the unit but take it to a qualified technical service agent.
- Electric installations to which the unit is connected must be in accordance to the norms for the electric installations in the civil constructions.

ASSEMBLY AND DISASSEMBLY OF BOWL

Assembly

- 1 Insert the " O RING " seal in the bowl verifying that it will be correctly positioned on its shape (see Fig. 1)
- 2 Push the bowl on two sides with a gradual pressure till the cooling cylinder will be fully entered in the bowl (see Fig. 2) . This operation will be completed when the bowl basement will touch the metallic structure of the unit. If difficulties are encountered on positioning the bowl please repeat the operation after having wet with water the 'O RING'.
- 3 Fix the lever of the tap into the two plastic pins of the bowl (see Fig. 3 and Fig. 4)
- 4 insert the tap steam into the bowl (see Fig.5)
- 5 Pour a small quantity of liquid into the bowl and make sure installation has been done correctly, then fill the bowl.
- 6 At last proceed with positioning the shovel agitator.

Disassembly

- 1 Draw out the agitator pushing the metal extremity of the shaft and pull the agitator itself up simultaneously.
- 2 Draw out the steam of the tap
- 3 Draw out the lever of the tap
- 4 To draw out the bowl apply a small pressure down - up in the frontal side of the bowl, for a correct operation keep a hand on the cooling cylinder.

ADJUSTMENT OF DRINK TEMPERATURE

Turn off the general switch then pull off the plug from the grid supply. Remove the lateral left panel for model 1 / 14, the right one for models 2 / 14, 3 / 14 and 4 / 14, turn the knob clock wise if a drink lower temperature is required. Reassembly the panel, connect again the unit to the grid supply and check for the new temperature after 30 minutes.

CLEANING THE UNIT

- Every day clean and sanitize the bowl(s) and tap(s) and shovel(s) agitator.
- For the cleaning of bowl use neutral liquid detergent for kitchenware and smooth cloth to avoid scratch on the bowl's surface. The others part in stainless steel can be cleaned by neutral detergent, acid and basic products may damage the superficies.

TECHNICAL CHARACTERISTICS OF BEVERAGES DISPENSERS

Model: CD 1 / 14

Capacity : 1 bowl of 14 litre
Power compressor : 1 / 8 Hp
Weight : Kg. 21
Power supply : 230 V 50 - 60 Hz
230 V 50 Hz
230 V 60 Hz
115 V 60 Hz

Model: CD 2 / 14

Capacity : 2 bowls of 14 litre each
Power compressor : 1 / 5 Hp
Weight : Kg. 28
Power supply : 230 V 50 - 60 Hz
230 V 50 Hz
230 V 60 Hz
115 V 60 Hz

Model: CD 3 / 14

Capacity : 3 bowls of 14 litre each
Power compressor : 1 / 4 Hp
Weight : Kg. 35
Power supply : 230 V 50 - 60 Hz
230 V 50 Hz
230 V 60 Hz
115 V 60 Hz

Model: CD 4 / 14

Capacity : 4 bowls of 14 litre each
Power compressor : 1 / 3+ Hp
Weight : Kg. 44
Power supply : 230 V 50 - 60 Hz
230 V 50 Hz
230 V 60 Hz
115 V 60 Hz

Elcor S.r.l. reserves the right to make modifications without any notice and without any obligation to modify those already delivered

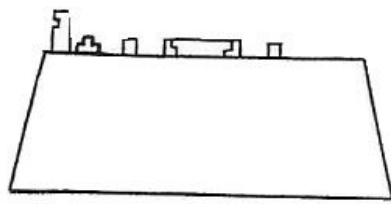


Fig. 1

↓ PUSH

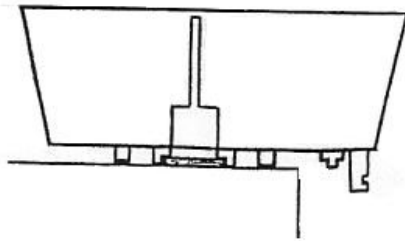


Fig. 2

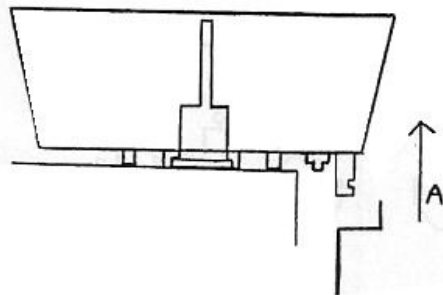


Fig. 3

↑ A

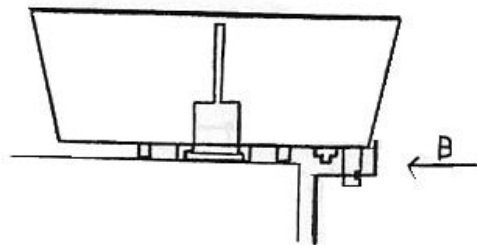


Fig. 4

← B

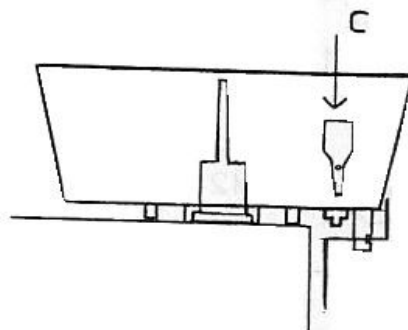


Fig. 5

↓ C

SCHEMA ELETTRICO - ELECTRIC OUTLINE - SCHEMA ELECTRIQUE- ESQUEMA ELÉCTRICO - ELEKTRISCHER SCHALTPLAN

LEGENDA	LEGEND	LEGENDE	LEYENDA	LEGENDE
I Interruttore generale	I Power switch	I Interrupteur	I Interruptor general	I Ein / Ausschalter
I1 Interruttore	I1 Switch	I1 Interrupteur	I1 Interruptor	I1 Schalter
I2 Interruttore	I2 Switch	I2 Interrupteur	I2 Interruptor	I2 Schalter
I3 Interruttore	I3 Switch	I3 Interrupteur	I3 Interruptor	I3 Schalter
I4 Interruttore	I4 Switch	I4 Interrupteur	I4 Interruptor	I4 Schalter
T Termostato Thermostat	T Thermostat	T Thermostat	T Termostato	T
M1 Motore agitatore	M1 Mixing motor	M1 Moteur agitateur	M1 Motor agitador	M1 Rührmotor
M2 Motore agitatore	M2 Mixing motor	M2 Moteur agitateur	M2 Motor agitador	M2 Rührmotor
M3 Motore agitatore	M3 Mixing motor	M3 Moteur agitateur	M3 Motor agitador	M3 Rührmotor
V Ventilatore	V Fan	V Ventilateur	V Ventilador	V Ventilator
C Compressore Kompressor	C Compressor	C Compresseur	C Compresor	C
S Spina	P Plug	P Prise de courant	S Espina	S Stecker
b blu blau	b blue	b bleu	b azul	b
m marrone	m brown	m marron	m marrón	m braun
g giallo / verde grün	g yellow / green	g jaune / vert	g amarillo / verde	g gelb /

